

Frame anchor type SA-H



Cross references

Bit hexalobular TX25
 Hammer drill SDS plus®
 Precision drill bit HSS

Application range

- > Direct fastening of wooden or aluminum-wood windows in masonry and concrete, without any anchors
- > Efficient spaced fixing of windows and doors
- > Installation according to the RAL quality association guidelines for windows and doors

Properties

- > Burglar-resistant (RC2)
- > Reduced forming moulding and exact fit due to perfect thread geometry
- > Fast installation, reliable anchoring
- > Slim head pulls into the wooden outer frame flush with the surface
- > Case-hardened steel

Installation process

- > Drill Ø 6.2 mm frame holes, in-plant or on site, spacing acc. to RAL quality assessment
- > Align frame thoroughly in masonry opening
- > Drill holes into stone, for Ø refer to table, drill hole depth = installation depth + 10 mm
- > Fasten the EJOT frame anchors

Edge distances

It is a special benefit of the EJOT frame anchors that they have virtually no expansion. Therefore, significantly smaller edge distances are possible than with conventional anchors. Please note the information given by the wall material manufacturer. Without specification given by the wall material manufacturer, we recommend a minimum edge distance of 50 mm for the EJOT frame anchors.

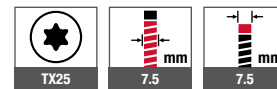
Note

For the installation of burglar-resistant or anti-fall devices, special assembly instructions apply!
www.ejot.com/window-and-glass-facade-technology

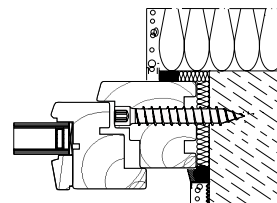
Applications



Technical specifications



Certifications





Building materials	Installation depth ≥ [mm]
Concrete	30
Sand-lime brick, solid brick	40
Vertically perforated brick, lightweight concrete, pumice, aerated concrete	60
Soft wood	60
Hard wood	40

Building materials	Pre-drilling diameter [mm]	Drilling method
Steel, t = 2 mm	6.2	Rotary drilling
Steel, t = 4 mm	6.5	Rotary drilling
Concrete ≥ C12/15, Solid sand-lime brick, solid brick	6.0	Hammer drilling
Perforated sand-lime brick, Hollow block, hard wood	6.0	Rotary drilling
Vertically perforated brick ≥ Plan T12	5.0	Rotary drilling
Aerated concrete ≥ PP4	omitted	omitted

Product online



Order description	Length [mm]	PU [pieces]	Price/100 [EUR]	Article number	EAN
zinc-plated, blue passivated					
Frame anchor type SA-H-7.5x60	60	100		2249060601	4061245012933
Frame anchor type SA-H-7.5x80	80	100		2249080601	4061245012926
Frame anchor type SA-H-7.5x100	100	100		2249100601	4061245012919
Frame anchor type SA-H-7.5x120	120	100		2249120601	4061245012902
Frame anchor type SA-H-7.5x135	135	100		2249135601	4061245012896
Frame anchor type SA-H-7.5x150	150	100		2249150601	4061245012889
Frame anchor type SA-H-7.5x180	180	100		2249180601	4061245012872
Frame anchor type SA-H-7.5x250	250	50		2249250601	4061245081977
Frame anchor type SA-H-7.5x300	300	50		2249300601	4061245081984
Cover caps available on request					